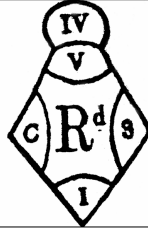


Earthenware Mark E15

This is a fairly uncommon mark used mainly on dinner and toilet wares. Both printed and impressed marks have been seen, often on the same piece.

Printed marks are generally in the same colour as the main transfer print.



<u>Mark</u>	<u>Date</u>	<u>Frequency</u>
Impressed	1850-1882	uncommon
Printed	1850-1882	less common

Both printed and impressed forms are usually found with other impressed marks such as E6b and E12. Up to 4 different marks, including both registration marks, have been seen on one item.

