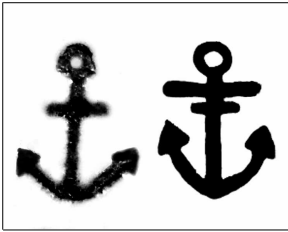


Earthenware Mark E1

A rare impressed mark on early earthenwares such as pearlware and chalcedony. Perhaps few of these soft-bodied earthenwares have survived.

The second, very rare form, may be mark E2 without the curved Davenport stamp.



Mark

Impressed

Date

c1794-1820+

Frequency

rare

The leaf dish below bears the second version of this mark.

