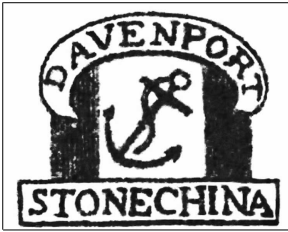


## Stone China Mark S1

This is the earliest and most common stone china mark, transfer printed underglaze in **blue** from c1815 to about 1870.

Rare forms of the mark have been seen printed in **brown**, **green**, **orange**, **puce** and **red**.



The **blue**, **brown**, **puce** and **red** marks all occur on early stonewares with low pattern numbers. The **orange** mark has been seen on a butter dish c1845, and the bright **green** mark on majolica wares c1870+.

